



YIMBY+

ABOUT

SUBSCRIBE

FORUMS



Search ...

HOME

4714 NORTH FLAGLER DRIVE

Alba Palm Begins Vertical Ascent At 4714 North Flagler Drive In West Palm Beach

*the*Guarantors

Stabilize new properties, faster

Strategies for lease-up success.

[Read More](#)



BRANDING & DESIGN FOR LUXURY DEVELOPMENT

KRINSKYDESIGN.COM

Follow on Instagram

Alba Palm Beach. Credit: BGI Companies, Blue Road.

BY: OSCAR NUNEZ 8:00 AM ON AUGUST 8, 2024

Construction is ascending on **Alba Palm Beach**, a 22-story residential building at **4714 North Flagler Drive** along the Intracoastal Waterway in **West Palm Beach**. Designed by **Spina O'Rourke + Partners** with Schmidt Nichols as the landscape architect and developed by **BGI Companies** and **Blue Road Group**, the 262-foot-tall structure will offer 55 residences, including four unique two—and three-story townhomes with unobstructed views of the Intracoastal Waterway and private plunge pools. Moss Construction is the general contractor.

On July 27, significant concrete was completed, involving approximately 4,800 square feet at a depth of 8'-6", using roughly 1,500 cubic yards of concrete. This included 310 tons of reinforcing steel. The concrete pour utilized two pump trucks and was supplied by three separate Titan concrete plants. It started at 4:00 AM and continued for over 10 hours, with a 140-150 cubic yards placement rate per hour.



Alba Palm Beach. Credit: Orange Dog Collective LLC.

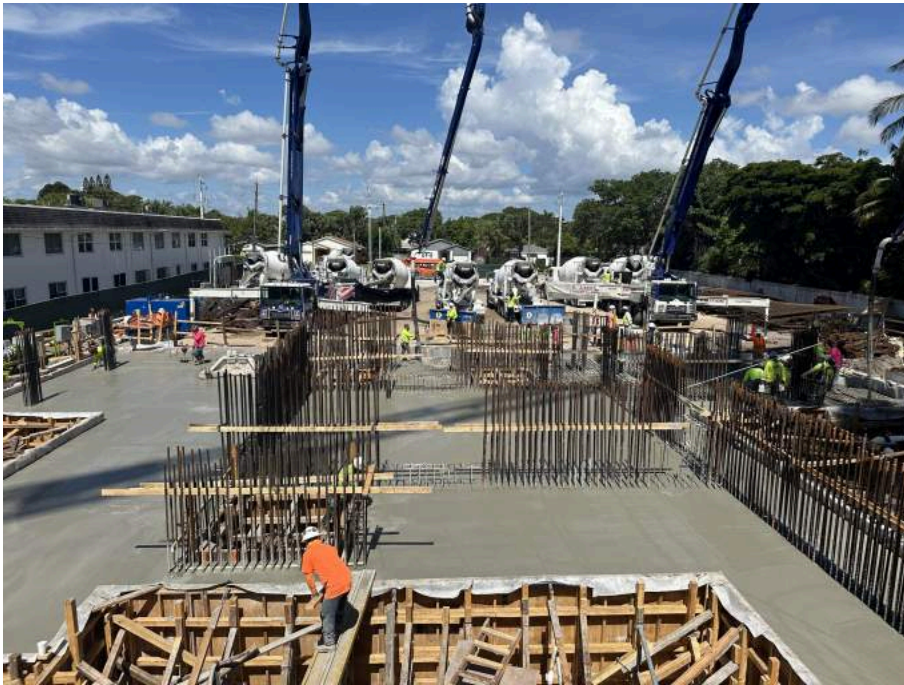


Alba Palm Beach. Credit: Orange Dog Collective LLC.

On July 30, the first elevated deck pour was carried out. The first elevated slab involved 10 tons of steel and 4 tons of PT. It required 160 yards of concrete and took approximately 3-4 hours to pour and another 4 hours to finish.



Alba Palm Beach. Credit: Orange Dog Collective LLC.



Alba Palm Beach. Credit: Orange Dog Collective LLC.

Foundation work commenced just a few months ago, and it involved installing more than 500 piles, 170 tons of rebar, and nearly 3,000 cubic yards of concrete.



Alba Palm Beach. Credit: BGI Companies, Blue Road.



Alba Palm Beach. Credit: BGI Companies, Blue Road.

Units at Alba Palm Beach will feature spacious layouts, floor-to-ceiling hurricane-impact windows, sliding doors, glass-framed terraces, and summer kitchens. Each floor will have a limited number of residences, with private elevators and vestibules enhancing privacy. The homes will have Italian-designed kitchens by Italkraft, high-quality stainless steel appliances from SubZero® and Wolf®, and designer bathroom fixtures and finishes.



Alba Palm Beach – Owner's Lounge. Credit: BGI Companies.



Alba Palm Beach – Master Bedroom. Credit: BGI Companies.

Amenities will include a day dock with slips, pool decks that capture sunrise and sunset views, and a Technogym® fitness room with a yoga studio and Pilates reformer. The development dedicates over 25,000 square feet to amenities, including a modern conference area with audio-visual capabilities, private workspaces, a multi-sport simulator room, a theater, and a private dining room with climate-controlled wine storage.



Alba Palm Beach – Sunset Pool Deck. Credit: BGI Companies.



Alba Palm Beach. Credit: BGI Companies, Blue Road.



Alba Palm Beach. Credit: BGI Companies, Blue Road.



Alba Palm Beach. Credit: BGI Companies, Blue Road.

Alba Palm Beach appears to be on track for completion in 2026.